



Ride along the Grand River in Riverside Park on the Grand River Edges Trail.

Photo by Karen Gentry

Grand River Edges Trail

The Grand River Edges Trail follows along the banks of the Grand River, including 2.2 miles of paved path in Riverside Park that connects to the Fred Meijer White Pine Trail State Park in Comstock Park.

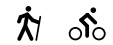
The downtown loop of the Grand River Edges Trail from Fulton Street to the 6th Street Bridge is a popular stroll for visitors and local residents. The “loop” traverses the original rapids for which the city was named and passes by some of the area’s most notable attractions. Construction of the trail between Ann and Leonard Streets is still in the engineering and planning phase. For now, you will need to ride along a designated bike lane on Monroe Street to connect with the north and south sections of the trail.

Butterworth Trail

Completed in 2010, the Butterworth Trail derives its name from the old Butterworth landfill that is being restored as a natural area on the banks of the Grand River. The best public access is at the Millennium Trailhead. You’ll find another trail entrance on Butterworth Avenue across from John Ball Park between the freeway overpass and the Coca-Cola bottling facility. Follow the paved path along the Grand River or Wealthy Street and cross over a restored railroad bridge where you can enjoy spectacular views of the river and Grand Rapids skyline.

Seward Avenue Bikeway

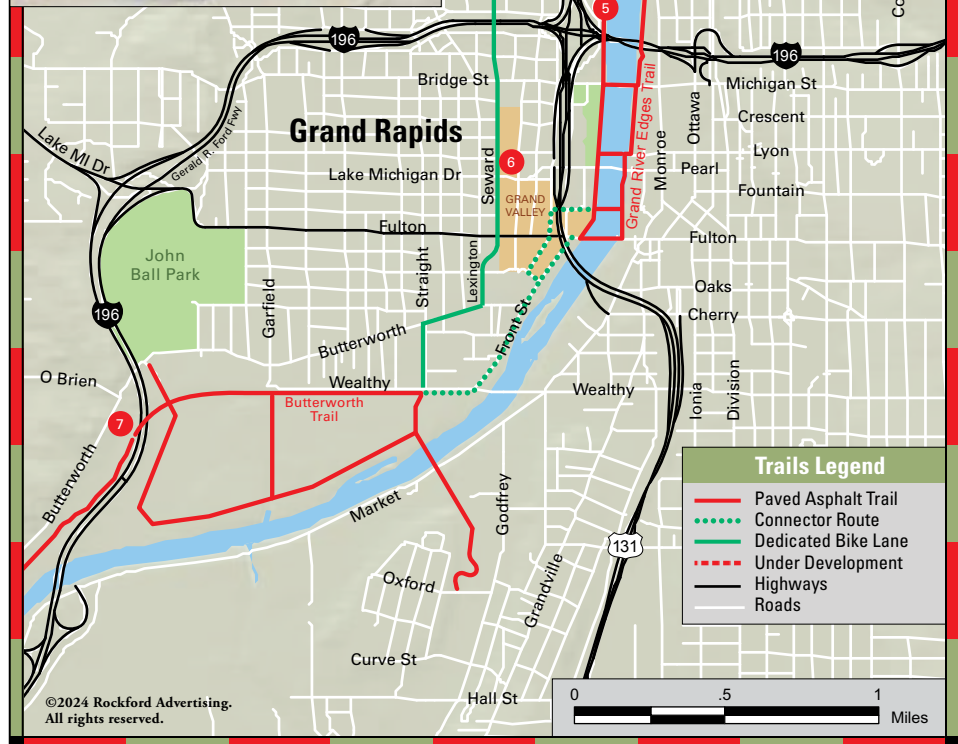
Completed in 2015, the 3.5-mile Seward Avenue Bikeway was developed to create a safe nonmotorized north-south route for cyclists and runners connecting Riverside Park and the River Edges Trail on Ann Street to the Butterworth Trail and Kent Trails network on Wealthy Street. The Bikeway is a combination of dedicated bike lanes (sharrows) on Seward Avenue, paved bike paths on the northern section of the trail and widened sidewalks along Ann Street. Follow the directional signage when riding between Fulton and Wealthy street.



Grand River Edges Trail Access			
Access Site	Parking	Restrooms	Water
1 North Riverside Park	Yes	Yes	Yes
2 South Riverside Park	Yes	No	No
3 Canal Street Park	Yes	Yes	Yes
4 6th Street Bridge Park	Yes	Yes	Yes
5 Fish Ladder Park	Yes	Yes	No

Seward Avenue Bikeway Access			
Access Site	Parking	Restrooms	Water
6 Area 9 Public Parking	Yes	Yes	Yes

Butterworth Trail Access			
Access Site	Parking	Restrooms	Water
7 Millennium Trailhead	Yes	Yes	Yes



Trails Legend	
—	Paved Asphalt Trail
- - -	Connector Route
—	Dedicated Bike Lane
- - -	Under Development
—	Highways
—	Roads

©2024 Rockford Advertising. All rights reserved.